

PENTIUM LEAP VENTURES LIMITED

Builders, Mechanical, civil Engineering, Construction, Dredging and Procurement

COMPANY PROFILE

...for a quality guaranteed service.....

1.0 COMPANY DATA

Name: **PENTIUM LEAP VENTURES LTD**

Head Office: 129
ABULOMA ROAD,
PORTHARCOURT
, RIVERS STATE

Postal Address:

Communication:

[pentiumleap@yahoo.co
m](mailto:pentiumleap@yahoo.com),
[pentiumleap@gmail.co
m](mailto:pentiumleap@gmail.com)

E-mail address: m

Bankers:

FIRST CITY MONUMENT
BANK, ABULOMA ROAD

...for a quality guaranteed service.....

Page 2 of 25

2.0 COMPANY BRIEF HISTORY & CAPABILITIES

2.1 BRIEF HISTORY

PENTIUM LEAP VENTURES LTD is an indigenous company own and managed by distinguished professionals in their chosen endeavours; after years of intense field exposure and experience, the company was registered in 14TH December 2017 under the FEDERAL REPUBLIC OF NIGERIA COMPANIES AND ALLIED MATTERS ACT OF 1990. PENTIUM LEAP VENURES LTD is registered as an engineering contracting company and its line of business spans through:

- ✓ Equipment Supply
- ✓ Process and pipelines services, Maintenance/Construction of Oil and Gas Facilities
- ✓ integrity and construction services
- ✓ Instrumentation, Mechanical and Electrical Construction works
- ✓ Vessels Inspection, cleaning & maintenance.
- ✓ General Engineering, Construction and Maintenance Services

...for a quality guaranteed service.....

MISSION STATEMENT

The mission of **PENTIUM LEAP VENTURES LIMITED** is to provide unique and quality service focused on servicing the needs of our clients. The company will achieve this with their team of motivated, creative and well trained engineers and technicians. Our aim is to excel in our core areas of operation, satisfying and possibly exceeding our clients' expectations.

VISION STATEMENT

Being a company with a unique heritage that is acclaimed, our vision is to enhance a consistent growth through a conscious quality, safety, competent and prompt execution of jobs and provision of services to our clients thereby enhancing a steady growth and pioneering the local content regime., Thus we will continue to:-

- ❖ Hold to the supreme standards of ethics and integrity.
- ❖ Be very responsive to and strive to exceed the company's we work for expectation by our performance.
- ❖ Be on the vanguard to work with maximum safety standards and promote environmental friendly area through workshop, training and seminars.
- ❖ A continuous improvement as an essential part of the way to operate. Training and re-training of staffs
- ❖ Create a work environment, supported by a leadership that fosters openness, trust, communication, teamwork, empowerment, innovation and satisfaction.
- ❖ Working closely and harmoniously with the host companies we work for in all areas of our operation in order to achieve our aims and goals and ensure standard in our working environment.

SAFETY POLICY

Safety is something that cannot be done away with a wave of the hand as far as life is concerned, more especially where it involves heavy-duty equipment. In this regard it has become the responsibility of everyone irrespective of position or designation in the organization. Unsafe acts can result in serious injuries or loss of life as well as loss in valuable man-hours. It is for this purpose that safety measures in all our operations, is seriously emphasized as a strategic policy to our existence as a corporate entity. Environmental protection, effective waste management as stipulated in the laws of the Federal Republic of Nigeria as well as job security are basic thrust in which PENTIUM LEAP VENTURES LIMITED. conduct operations.

HEALTH, SAFETY, ENVIRONMENT, COMMUNITY AFFAIRS AND SECURITY (HSE/CAS) POLICY STATEMENT.

It is the policy of **PENTIUM LEAP VENTURES LIMITED** to conduct its operations in a safe manner, to ensure good health of its personnel, secured environment and be sensitive to the needs and concerns of the communities around its area of operations.

PENTIUM LEAP VENTURES LIMITED runs its operations and is managed in such a way as to achieve the following:

- ◆ Preserve the health, safety and security of the employees and members of the public who may be affected by our operations.
- ◆ Preserve or minimize the impact of its operation on the environment.
- ◆ Secure Company and Client's assets.
- ◆ Be sensitive to the needs and concerns of the communities around the operational area
- ◆ No activity shall be carried out unless considered safe. Every job can be done safely.
- ◆ All staff recognizes HSE as a line responsibility.

PENTIUM LEAP VENTURES LIMITED employees and contractors must plan and perform their work in accordance with this policy. Any job that cannot be done in accordance with this policy must not commence or continue.

YINKORE FRED PERE
(MD)

DRUGS AND ALCOHOL POLICY

It is an offence for any staff of **PENTIUM LEAP VENTURES LIMITED** to be:

- In possession of or under the influence of any drug as marijuana, cocaine, amphetamine, hashish etc.
- Under the influence of alcohol
- In possession of other illegal or controlled substance

While working or residing in any active site, including water borne operation or property under our control.

This policy applies to all operations and all locations on a 24-hour basis. Unannounced searches and screening shall be conducted to ensure compliance.

YINKORE FRED PERE
(MD)

EQUIPMENT MAINTENANCE POLICY

- All equipment MUST be regularly maintained.
- Routine maintenance shall be planned and executed, as may be required based on manufacturer's instruction. The aim is to put all equipment in serviceable order for a hitch free use.
- It is mandatory that equipment operators report immediately any break or faults observed in their equipment. Late reporting of faults shall be met with appropriate punishment.
- Only experienced personnel shall be authorized to carry out maintenance on any of the equipment.
- Toolbox meetings on proposed equipment maintenance must precede the maintenance work planned for each day.
- All maintenance work shall be carried out in accordance with the company's safety maintenance procedures. The maintenance crew must be briefed before each maintenance work.
- The implementation of the maintenance policy shall be the responsibility of the mechanical engineer, who should report to the Plant Manager.

YINKORE FRED PERE

(MD)

SECURITY POLICY

It is the policy of **PENTIUM LEAP VENTURES LIMITED** to manage security with all amount of sensitivity so as to minimize the number of security related incidents for staff, clients and third party personnel involved in her operations.

To ensure the implementation of this policy, the Company shall:

- Engage adequate number of trained security personnel in her area of operation.
- Engage a Safety Officer who will organize, co-ordinate and implement all the Company's security ideals and programs.
- All security incidents will be properly reported to client and law enforcement agents (where necessary)
- Use local security men to protect equipment and facilities at worksites in a bid to forge good rapport between the Company and its host community.
- Review all security incidents in site/management meetings.

The Safety Officer shall be the focal point and shall act in concert with relevant departments in the achievement of set security objectives and targets.

On the other hand, when the equipment is on lease, security matters becomes the responsibility of our client until the equipment is returned safely back to **PENTIUM LEAP VENTURES LIMITED** yard.

YINKORE FRED PERE
(MD)

JOURNEY MANAGEMENT POLICY

The following are put in place before mobilizing any equipment to site:

- Visual inspection of equipment including remobilization check.
- Vehicle maintenance programme probe.
- Conditions of driver.
- Test running engines.
- Equipment- required documents, Ok and current.
- Required accessories in place (spare tyre, fire extinguisher, set of spanners, set of screw drivers, wheel spanner, caution triangle, first aid box etc).

YINKORE FRED PERE
(MD)

3.0 EXECUTIVE PERSONNEL AND MANPOWER AVAILABLE

PLVL is managed by group of distinguished professionals with wide experience in chemical, petrochemical, marine, oil and gas engineering. A brief description of our Executive Personnel is enclosed at the end of this profile. Tables 4.1 and 4.2 shows a detailed breakdown of our Key Personnel and Staff available, while Table 4.3 gives the names and qualifications of the men who drive the Company with Vision.

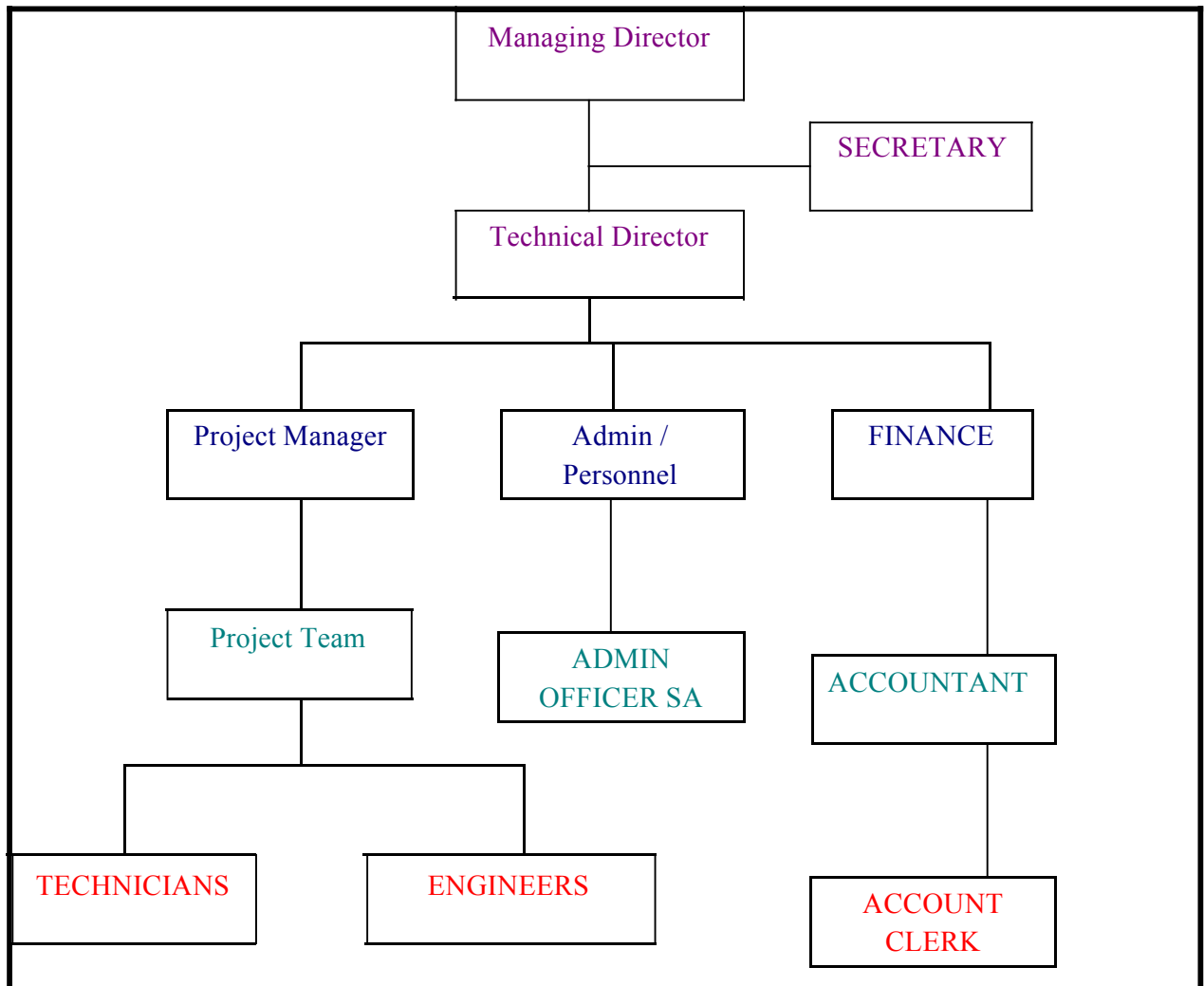
S/N	NAME	DESIGNATION	QUALIFICATION
1		MANAGING DIRECTOR	B.SC
2		TECHNICAL DIRECTOR	B Eng/COREN/MNATE
3		PROJECT MANAGER	B Eng
4		QA/QC MANAGER	B Eng/NACE II
5		SHE COORDINATOR	B Eng/M PGM
6		CONSTRUCTION ENGINEER	B Eng/COREN/MNATE
7		SITE ENGINEER	B Eng/MNSE
8		E & I ENGINEER	B Eng/MNSE
9		STRUCTURAL ENGINEER	B Eng
10		PROJECT ENGINEER	B Eng
11		LEAD DESIGN ENGINEER	B Eng

Curriculum Vitae of personnel to be allocated to each project or contract are usually enclosed in the Contract execution plans development for each specific project and submitted to client during the front-end planning of such contracts. We also have the capacity to source and mobilize additional experienced personnel for specialist activities if required.

Table 4.2 – Breakdown of Company Personnel Available

Category	Qty	Nationality	Status
Engineers	5	Nigerian	Contract
Draughtsmen	2	"	Permanent
Marine Engineers/Chief Mates	6	"	Contract
Marketing Staff	2	Nigerians	Permanent
Mechanical Technicians	5	"	Contract
Electrical Technicians	5	"	Contract
Instrumentation Technicians	4	"	Contract
Metal Fabricators	4	"	Contract
Pipe Fitters	5	"	Contract
ASME IX Coded Welders - SMAW	4	"	Contract
ASME IX Coded Welders - GTAW	4	"	Contract
Painters	6	"	Contract
Administration	2	"	Contract
Logistics Supervisors	2	"	Contract
Materials Supervisors	2	"	Contract
Labour	40	"	Contract
Trade Contractors (Various Skills)	20	Nigerians	Contract
Pump/Generator Operators	10	Nigerian	Contract

ORGANOGRAM



4.0 FACILITIES & EQUIPMENT AVAILABLE

As an organization, we understand only the best can help us in delivering our projects on time as such deliberate effort is on hand to ensure only up to date equipment are mobilize for all our projects.

Project equipment template shall be issue before pre-mob.

5.0 MAJOR SERVICES & EXECUTION STRATEGIES

The company core area of operation as mention above viz:

- ✚ **EQUIPMENT SUPPLY, PROCESS AND PIPELINE CONSTRUCTION SERVICES, PROCUREMENT OF MECHANICAL, INSTRUMENT, ELECTRICAL AND SAFETY MATERIALS.**
- ✚ **WASTE MANAGEMENT AND DISPOSAL OF DRILLING AND CONSTRUCTION WASTE.**
- ✚ **PIPELINE FLOW ASSURANCE & MAINTENACE SERVICES,**
- ✚ **VESSEL, TUBE/PLATE HEAT EXCHANGER INSPECTION AND MECHANICAL MAINTENANCE SERVICES.**
- ✚ **INSULATION SERVICES BOTH COLD AND HOT**
- ✚ **MANPOWER SUPPLY FOR CONSTRUCTION AND MAINTENANCE SERVICES.**

We have delivered time-tide projects to oil and gas industries, Governmental agencies, multinationals, individuals in the, both in the upstream and downstream.

EQUIPMENT SUPPLY

PENTIUM LEAP VENTURES LIMITED specializes in the supply, management, operation of mechanical and electric driven oil and gas equipment.

- ✚ Heavy Duty Generators –
- ✚ High Pressure Jetting Pumps and accessories
- ✚ Flapper Pumps
- ✚ Hydraulic submersible pumps

...for a quality guaranteed service.....

Page 14 of 25

PROCESS SERVICES

The Oil & Gas Industry acknowledges the fact that functional process and facilities integrity of process pipe lines and production control systems are prime priority prior to start up hence reducing major delays and incurring additional cost.

We offer professional services in pipelines fabrication, production control system integrated service solution to achieve the required level of integrity we have termed this as the Integrity Service Cycle, We also supply man power for special operations as demanded by our oil and Gas clients.

FLOW ASSURANCE SERVICES

PENTIUM LEAP VENTURES LIMITED offers a great deal of flow assurance jobs. We provide consultancy and support services for all aspects of pipeline flow assurance. The work undertaken is very often project specific and the Services team will manage projects on behalf of clients. The Services team, when running a project, will manage and carry out all key elements to ensure all project objectives are achieved. Typically this includes some or all of the following:

- Feasibility studies including pigging philosophy and subsea systems
- Pipeline isolation services
- Caliper surveys
- Pig tracking
- Joint testing



Inspection of tube exchanger

...for a quality guaranteed service.....



Foam, Metal Bodied (Mandrel) and Solid Polyurethane Pigs



Vessel inspection

CLEANING

PENTIUM LEAP VENTURES LIMITED offers **Chemical Cleaning** solutions for critical gas/cooling water process systems along with **Hot Oil Flushing** for control systems in order to ensure the required level of cleanliness is achieved to reduce or eliminate irregular temperature issues in process facilities.

TIGHTENING

The management of the installation and Torquing of the flange joints to the correct torque levels required is critical to ensure a successful integrity test and leak free oil & gas production systems is completed. **PENTIUM LEAP VENTURES LIMITED** can offer a full **Flange Management** solution including **Bolt Tensioning** and **Bolt Torquing** which can if required give full traceability.

TESTING

The testing of the oil and gas production systems is divided into two areas strength testing and integrity testing. **PENTIUM LEAP VENTURES LIMITED** can offer various testing applications **Hydro Testing, Pneumatic valve Testing, Air, Helium Trace Testing** and **Helium/Nitrogen Leak Testing**. The successful conclusion of the integrity testing normally Helium Nitrogen Testing is linked to the successful management of the other services. Due to the unique position as a Nigerian based company, High professional/ethical standards and practice is the norm. For this reason, We have adopted as our management systems ISO DNV QA to BS 5750 & 5770 BS EN ISO 9001:2000 for quality management and BS EN ISO 14001:1996 for environmental management, OSH 2006 for safety management. The company ensures that jobs are done with maximum standards.



Process line cleaning and chemical cleaning of process pipes.



Nitrogen Purging in Olomoro

PROCUREMENT SERVICES

Electrical and mechanical materials and tools.
Safety materials and tools.
Generator Set Supplies and spares supply.
Compressors and other Equipments/Oil Tools
Self powered lighting units

ELECTRICAL INSTALLATION/ELECTRICAL INSULATION:

In this area of specification, **PLVL**, parade a number of well trained and qualified Engineers, Electricians & Technicians for Low & High Voltage (LV & HV) engineering and industrial & domestic electrification Works.

All Electrical insulation work are carried out by the company's approved standard, work design and requirement conforming with IEC standards.

We are relevant in the following areas:

Power centralization and Transformer installations, Solar panel installation, DC Battery backup, UPS & inverter installations, laying of cables, Design of low voltage panel with mechanical interlock control, Rig cabinet installation & termination, Lightning and surge prevention system, Grounding & Earthing system, Cathodic Protection system installation and Electrical Wiring of all sorts.

INSTRUMENTATION SERVICES

In this area, **PENTIUM LEAP VENTURES LIMITED** has capable hands on system design analysis, installation and process functionality tests before commissioning.

We lay, terminate and gland all instrument cables (Foundation Fieldbus (FF) cable as well) Cables to Junction Boxes/ Instruments. We Hook-up instruments to main Substation and energize.

We also Trouble shoot process line instruments like pressure transmitter, temperature transmitter, level transmitter, flow transmitters, shutdown valve, control valves, pressure safety valve, and other ROV (Remote operated valves) . Also, gauges and indicators programmable logic control and DCS operations such as signal simulation from the field instrument for confirmation of the function and integrity of the instrument.

We install wireless Smoke detector, Manual call point & fire alarm system

CONSTRUCTION SERVICES

We also provide services such as Fabrication, general maintenance and Corrosion control services, we partner with Gelo Integrated services Ltd for pipeline construction services.

3.0 PERSONNEL

PENTIUM LEAP VENTURES LIMITED has a good quality workforce. Placing high value and recognizes the contribution made by our employees. Our emphasis is placed on training, retraining and development.

In this way, we ensure that our workforce is highly skilled and capable of delivering world class performance. From the Chief Operating Officer to any member of **PLVL**, our business culture, “quality and customers’ satisfaction” are ensured in all our activities

SHARED VALUES

Building partnership through trust and expertise

Projects in the oil and gas industry are intrinsically complex - in terms of engineering, economics, health, safety and environment. In addition to technical and business expertise, trust and dedication become all-important pillars of success. Co-operating with our employees, end-users and OEMs alike, **PENTIUM LEAP VENTURES LIMITED** builds on pro-active partnerships based on mutual understanding and awareness of the special needs of the oil and gas business, its scales and risks, its speed and direction. Whatever the primary motivation for seeking large-scale integrated solutions from a single supplier - whether the reduction of complexity, interfaces and costs, or tight start-up Schedules the Pea cot oil and gas portfolio reflects a set of shared values ensuring maximum return.

ECONOMICS

PENTIUM LEAP VENTURES LIMITED

Solutions are tailored to match all aspects of a customer's total cost-of-ownership model, ensuring the agreed solution provides maximum benefit at minimum cost.

STANDARDS

Backed by decades of experience, **PENTIUM LEAP VENTURES LIMITED** solutions are engineered in accordance with all relevant local content policy, international and company specific design standards.

KEY PERSONNEL AND RESUMES

The company has qualified and competent engineering and technical personnel for the execution of its project. The present distribution of company engineering personnel is provided when required by clients.

JOB PROFILE

S/ N	TYPE	PROJECT	CLIENT	LOCATION	YEAR
1.	EQUIPMENT SUPPLY	Supply of 2 Nos 1600CFM Air Compressor	Patoski Int'l Services Ltd	CNL Agbami FPSO	2018
2.	EQUIPMENT SUPPLY	Supply and Operation of 3 Nos 250KVA Generator	Stevanela Integrated Services Limited	Heritage Energy	2018
3.	MATERIAL SUPPLY	Supply of PPE's	Sabsolaz Nigeria Ltd	Sabsolaz Nigeria Ltd	2018
4.	MATERIAL SUPPLY	Supply of PPE's	Patoski Int'l Services Ltd	CNL Agbami FPSO	2018
5.	MATERIAL SUPPLY	Supply of PPE's	Frاندor Treasure Oil Nigeria Limited	Frاندor Treasure Oil Nigeria Limited	2018
6.	MATERIAL SUPPLY	Supply of PPE's	Franco Int'l Energy Services Ltd	Franco Int'l Energy Services Ltd	2018
7.	LOGISTICS SERVICES	Provision of Logistics Services (2 Toyota Hummer Buses for 40 days)	Estee Global Services Ltd	Rivers State	2018
8.	MATERIAL SUPPLY	Supply of Earthing Cables etc(70mm* 1750)	Franco International Energy Services Ltd	Bayelsa State	2017
9.	MANPOWER SUPPLY	Supply of 22 personnel (Hydrocarbon Storage Tank Cleaning Experts/ ESBA Experts)	Franco International Energy Services Ltd	SNEPCO BONGA FPSO	2017
10.	EQUIPMENT SUPPLY	Supply and Operation of 4 numbers diesel generators	Heritage Energy Operational Services Limited for OML 30 Operations	Afiesere flow station, Oweh flow station, Uzere flow station and Ughelli Production Centre	2017
11	MANPOWER SUPPLY	Supply of 32 personnel (Hydrocarbon Storage Tank Cleaning Experts/ ESBA Experts)	APS Procurement Services	SNEPCO BONGA FPSO	2019

OUR CLIENTS:

HERITAGE ENERGY OPERATIONAL SERVICES LTD
 REAL ACCORD NIGERIA LTD
 COMPREHENSIVES REMEDIATION TECHNOLOGIES LTD
 SOUTHWEST DESIGN AFRICA LTD
 STEVANELA INTEGRATED SERVICES LTD

